



Birlea

Suppliers of inspiration

Assembly Instructions

Thank you for
purchasing a
Birlea product.

For a chance to win a *Love 2 Shop* voucher simply post a picture of your new product on your preferred social channels tagging Birlea Furniture and using the hashtag **#ShareYourStyle** and **#Birlea**. One winner will be selected at random each month.

To view our full terms and conditions please visit our website: www.birlea.com

Are you happy with your purchase?

Yes: That's great, we would love to hear more from you. Please leave us a review on our social media channels or Trustpilot. Your feedback will be greatly appreciated.

No: If for any reason there is something missing, indifferent or incorrect with your order, please contact the retailer you purchased the item from. We will work with the retailer to resolve your issue as quickly as possible.



www.birlea.com

ASSEMBLY INSTRUCTIONS HANDLE

IMPORTANT: READ THESE INSTRUCTIONS CAREFULLY BEFORE ASSEMBLING OR USING HANDLE

PLEASE KEEP THESE INSTRUCTIONS FOR FUTURE REFERENCE

HEALTH & SAFETY:

DO NOT use this handle if any parts are missing, damaged or worn.

DO NOT use this handle unless all fixings are secured.

Always use on a level, even surface.

WARNING:

DO NOT over tighten the drawer knob to break mirror.

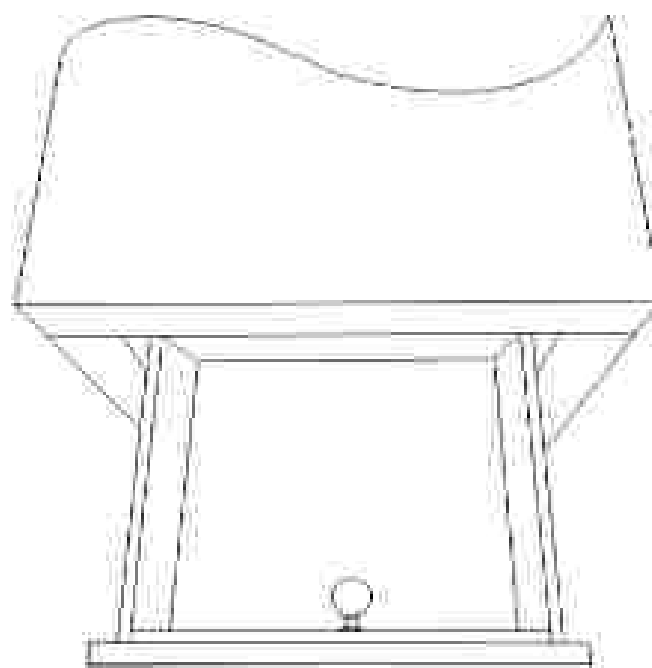
DO NOT use automatic screwdriver to avoid over tighten the handle.

PLEASE NOTE THAT THE HANDLE IS INSIDE THE DRAWER.

CARE & MAINTENANCE:

Periodically check all screws & fixings to ensure they are secure.

Keep any sharp objects away from the handle.



HARDWARE LIST:



A. HANDLE



B. RUBBER GASKETS

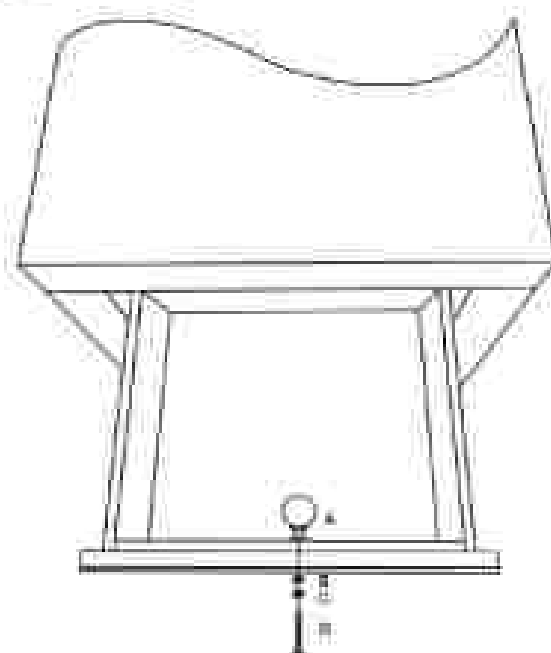


C. IRON WASHER

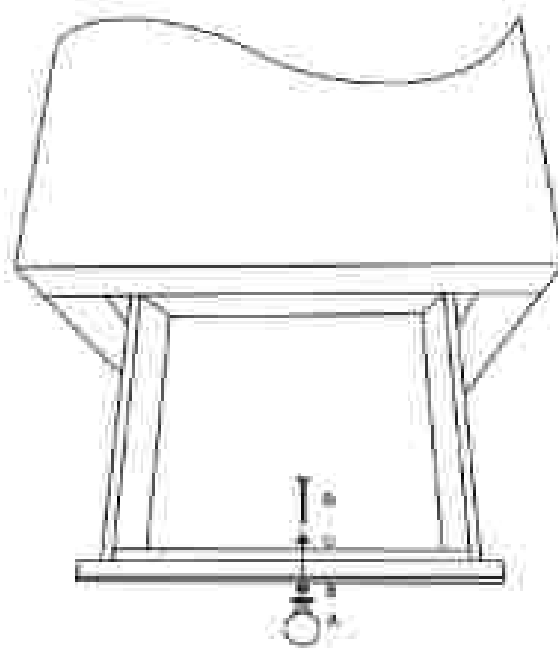


D. BOLT

Step 1: Open the drawer, Unscrew Bolt(D), Take out Handles(A), Rubber gaskets(B) and Iron Washer(C), as below picture.

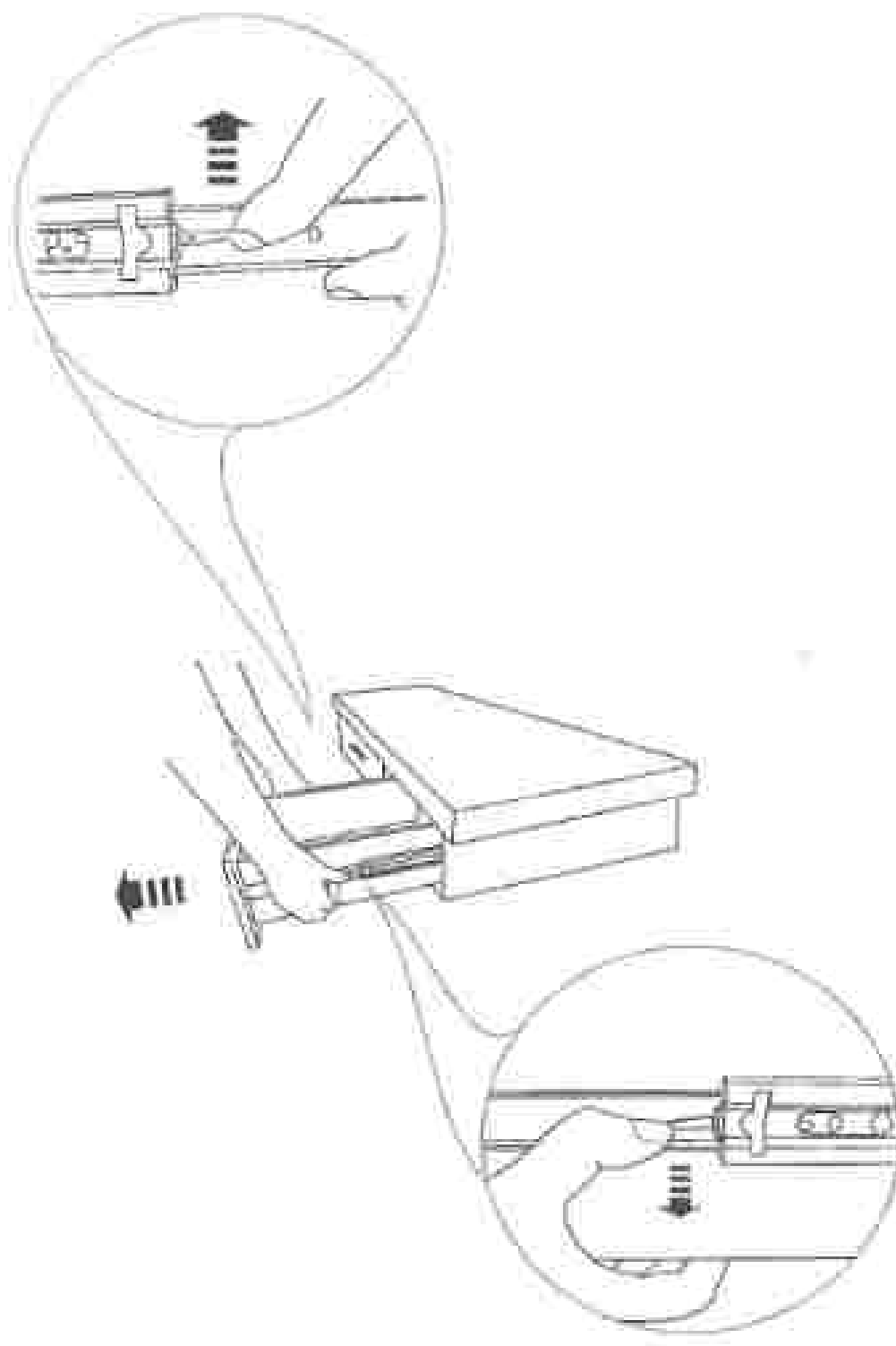


Step 2: Attach Handles(A) to the Drawer Front with Rubber gaskets(B), Iron Washer(C), and Bolt(D), as below picture.



WARM PROMPT:

If you need to remove the drawer, follow below steps.

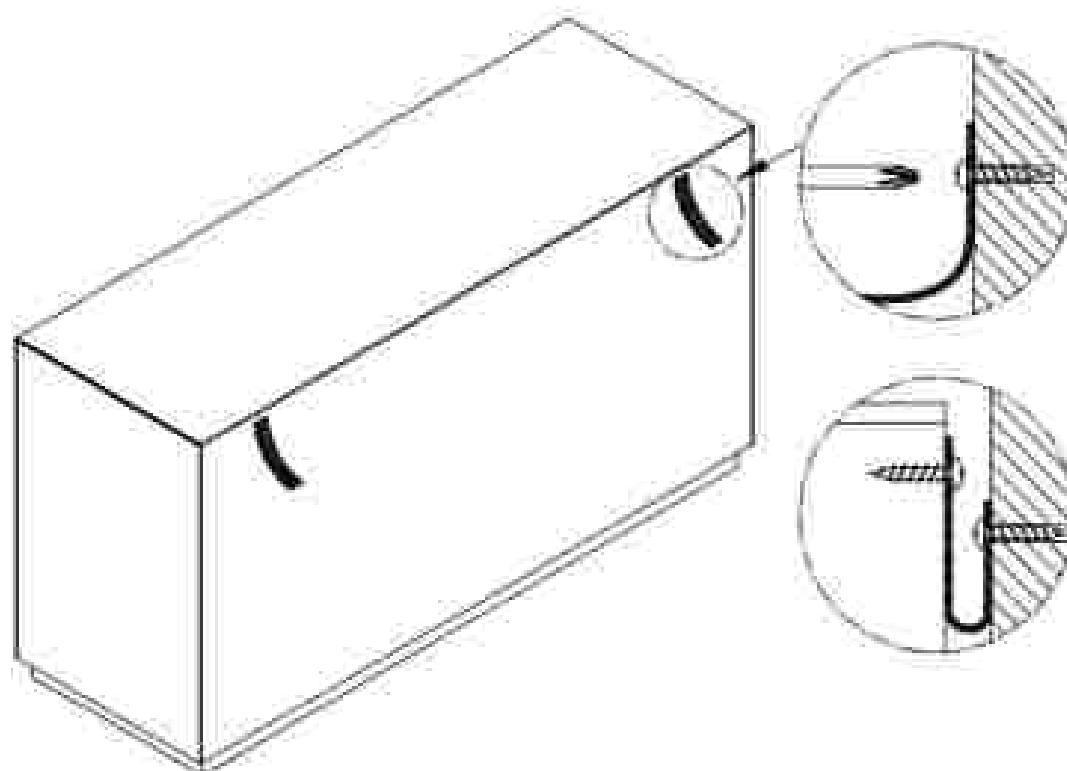


PLEASE NOTICE:

We recommend the use of the wall strap provided for safety reasons. Wall fixings are not included, please source suitable fixings for your wall type, if in doubt, please consult a qualified tradesperson.

WARNING:

Always ensure the wall to be drilled is free from hidden electrical wires, water and gas pipes.



Tools required



not supplied



not supplied



not supplied