

CHILD INFORMATION  
(KEEP WITH CAR SEAT AT ALL TIMES IN CASE OF EMERGENCY)  
NAME:

.....

DATE OF BIRTH (DD/MM/YYYY):

.....

ADDRESS:

.....  
.....  
.....

ALLERGIES/MEDICAL CONDITIONS:

.....  
.....  
.....

EMERGENCY CONTACT 1:

NAME:

.....

PHONE NUMBER:

.....

EMERGENCY CONTACT 2:

NAME:

.....

PHONE NUMBER:

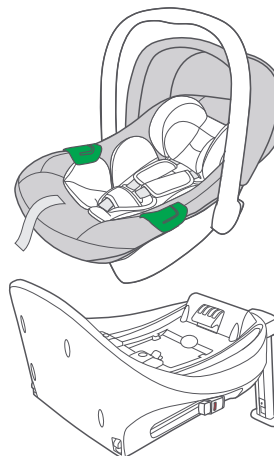
.....

[www.cozynsafe.com](http://www.cozynsafe.com)

Cozy N Safe  
Oxford Street, Wolverhampton, West Midlands, WV14 7DP, UK  
Tel: +44 (0) 1902 494905 | [Emailenq@cozynsafe.com](mailto:Emailenq@cozynsafe.com)

EU Authorized Representative: Authorised Representative service.  
Euro Stock Venture Traders Ltd  
Unit 1, 3 O'Connell Square, Edenderry, Co. Offaly, R45 Yr13 Republic  
Of Ireland

## INSTRUCTION MANUAL



# SNOWDON i-Size EST-320

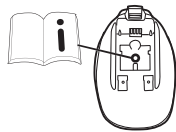


- H: 40–85CM
- W: ≤ 13KG

Congratulations on choosing COZY N SAFE child car seat. Please read this manual carefully and follow each step to ensure a comfortable ride and the best protection for your child. If you have any questions regarding the use of this child seat, please do not hesitate to contact us.

To utilize this infant child restraint with i-size Isofix connections in accordance with Regulation ECE R129/03, your child must satisfy the specified criteria: a height between 40-85cm and a weight of 13kg (roughly 1.5 years old or younger).

These instructions illustrate the use of the infant carrier module and the base. Please read all the instructions in this manual thoroughly before installing and using the product. Important!! Keep for future reference. Please read carefully. Store the instruction manual in the storage compartment at the bottom of the base, as shown in the right figure, or keep the instruction manual at the bottom of the soft goods.

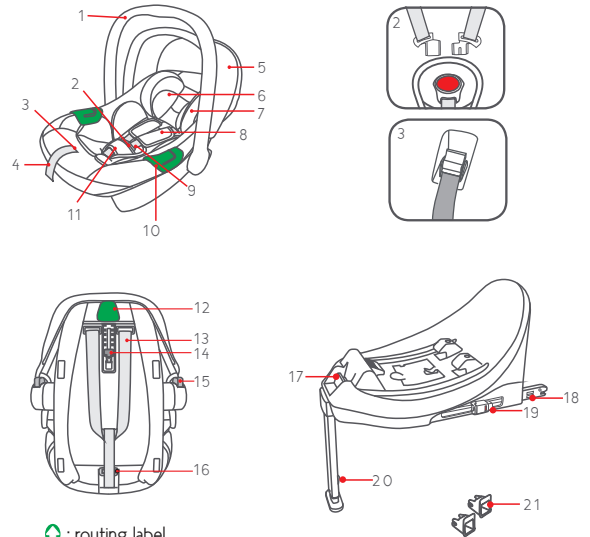


**⚠ WARNING: DO NOT** place a rear-facing child seat on the front seat with an airbag. DEATH OR SERIOUS INJURY may occur.

## Parts List

- |                                 |  |
|---------------------------------|--|
| 1. Handle                       | 12. Belt slot                            |
| 2. Buckle                       | 13. Y-Shaped belt                        |
| 3. Y-Shaped belt adjuster lever | 14. Height adjuster                      |
| 4. Y-Shaped belt adjuster strap | 15. Button                               |
| 5. Canopy                       | 16. Tbar                                 |
| 6. Head pad                     | 17. infant carrier module Release Button |
| 7. Headrest                     | 18. ISOFIX locking arms                  |
| 8. Chest pad                    | 19. ISOFIX button                        |
| 9. Y-Shaped belt                | 20. Support leg adjust button            |
| 10. Safety belt groove          | 21. ISOFIX Guides                        |
| 11. Comfort pad                 |  |

Please ensure that there are no missing parts. Contact the retailer if anything is missing.



 : routing label

## WARNING

- ! Before purchasing this infant child restraint, please ensure it can be properly installed in your vehicle.
- ! While no infant child restraint can guarantee complete protection from injury in an accident, the correct use of this infant child restraint will reduce the risk of serious injury or death to your child.
- ! To use this infant child restraint with ISOFIX connections in accordance with ECE R129/03 Regulation, your child must meet the following requirements: Child height 40cm-85cm/Child weight  $\leq$  13kg (approximately 1.5 years old or under).
- ! For the use of this infant carrier module with a vehicle belt, your child must meet the following requirements: Child height 40cm-85cm/Child weight  $\leq$  13kg (approximately 1.5 years old or under).
- ! Ensure that any straps on the infant child restraint are tightened and not twisted.
- ! DO NOT install this infant child restraint without following the instructions in this manual, as it may pose a serious risk of injury or death to your child.
- ! NEVER leave your child unattended with this infant child restraint.
- ! DO NOT make any modifications to this infant child restraint or use it along with component parts from other manufacturers.
- ! DO NOT use this infant child restraint if it has damaged or missing parts.
- ! DO NOT dress your child in large or oversized clothes, as this may prevent proper and secure fastening by the shoulder harness straps and the crotch strap between the legs.
- ! DO NOT leave this infant child restraint or other items unbelted or unsecured in your vehicle, as an unsecured infant child restraint can be thrown around and may injure occupants in a sharp turn, sudden stop, or collision.
- ! DO NOT place a rear-facing infant child restraint on the front seat with an airbag. Death or serious injury may occur. Please refer to the vehicle owner's manual for more information.
- ! NEVER use a second-hand infant child restraint or an infant child restraint with an unknown history, as it may have structural damage that compromises your child's safety.

## WARNING



- ! NEVER use ropes or any other substitutes to secure the infant child restraint in the vehicle or to secure the child into the infant child restraint.
- ! DO NOT use this infant child restraint without the soft goods. The soft goods should not be replaced with any other than those recommended by the manufacturer, as they constitute an integral part of the infant child restraint's performance.
- ! DO NOT place anything other than the recommended inner cushions in this infant child restraint.
- ! Ensure that the infant child restraint is installed in a way that no part of it interferes with movable seats or the operation of vehicle doors.
- ! DO NOT continue to use this infant child restraint after it has been involved in any type of crash, even a minor one.
- ! Remove the infant carrier module and base from the vehicle seat when it is not in regular use.
- ! Consult the distributor for issues concerning maintenance, repair, and part replacement.
- ! To avoid the risk of falling, always secure the child using the child harness when placing the child in the infant carrier module, even when the infant child restraint is not in the vehicle.
- ! Before carrying the infant carrier module by hand, ensure that the child is fastened with the child harness and that the handle is correctly locked in a vertical position.
- ! To prevent serious injury or death, NEVER place the infant carrier module on an elevated surface or seat with the child in it.
- ! The parts of this infant child restraint should not be lubricated in any way.
- ! Always secure the child in the infant child restraint, even on short trips, as most accidents occur during such instances.
- ! DO NOT use this infant child restraint for more than 5 years after the purchase date, as parts may degrade over time or from exposure to sunlight.
- ! Please keep this infant child restraint away from sunlight, as it may become too hot for the child's skin. Always touch the infant child restraint before placing the child in it.

## WARNING

- ! Frequently check the ISOFIX guides for dirt and clean them if necessary, as the reliability may be affected by the ingress of dirt, dust, food particles, etc.
- ! DO NOT place any objects in the load leg area in front of your base.
- ! DO NOT use any load-bearing contact points other than those described in the instructions and marked on the infant child restraint.
- ! Please do not use this child restraint if it has dropped from a significant height, hit the ground at a considerable speed, or shows visible signs of damage. We are not responsible for replacement if the car seat has been damaged under these abnormal conditions. A new car seat will need to be purchased when any of the aforementioned conditions occur.

## Emergency

In the event of an emergency or accidents, it is crucial to ensure that your child receives immediate first aid and medical treatment.

Figure for Installation	Suitable for
	Child height 40cm–85cm/ Child weight ≤ 13kg (approximately 1.5 years old or under)
	Child height 40cm–85cm/ Child weight ≤ 13kg (approximately 1.5 years old or under)

## Product Information

The 'i-Size' (Integral Universal ISOFIX Child Restraint Systems) is a category of Infant Child Restraint System designed for use in all i-Size seating positions within a vehicle.

Please note that not all vehicle manufacturers' handbooks currently list i-Size compatibility. However, this seat and base are approved for use in ISOFIX compatible vehicles. For specific information, kindly refer to the vehicle manufacturer's website or consult your dealer.

1. In accordance with the ECE R129/03 Regulation, the infant carrier module with the base is a Universal ISOFIX child restraint and should be fitted using the ISOFIX connections.
2. This is an 'i-Size' infant child restraint system. It is approved under UN Regulation No. 129 for use in 'i-Size compatible' vehicle seating positions, as indicated by vehicle manufacturers in the vehicle user's manual.
3. If there is any uncertainty, please consult the infant child restraint manufacturer or the retailer for clarification.

## Concerns on Installation

see images ① – ②

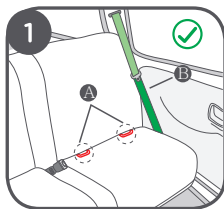
### ① A ISOFIX Attachments

This infant carrier module is suitable for vehicle seats with i-Size ISOFIX anchor points with the Base.

### ① B 3-point Safety Belt

This is an universal belted enhanced child restraint system. It is approved according to UN Regulation No.129, for use primarily in "Universal seating positions" as indicated.

**!** DO NOT install this infant child restraint on vehicle seats movable during installation.



2



40CM - 85 CM  
≤ 13KG



### NOTICE

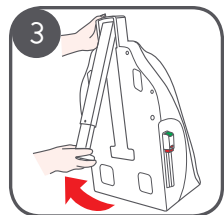
- ✓ You can install in this position.
- ✗ It cannot be installed in this location.
- ⊗ Do not install the child safety seat at the front seat with air bag.
- ⊗ Only with ISOFIX attachments or with the three point safety belt can install in this place.

## Installation with base

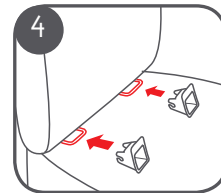
Rearward facing, i-Size, 40-85cm.  
ISOFIX + Support leg + Y-shaped belt

see images ③ – ⑧

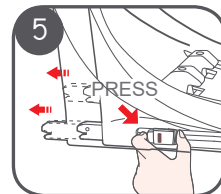
1. Extend the support leg from its storage compartment ③



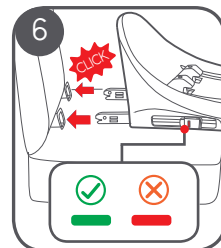
2. Install the ISOFIX guides onto the designated ISOFIX anchor points. ④  
These guides serve a dual purpose – safeguarding the vehicle seat surface from potential tearing and facilitating the proper alignment of the ISOFIX connectors.



3. Press the ISOFIX button to release and extend the two locking arms from the bottom of the base. ⑤

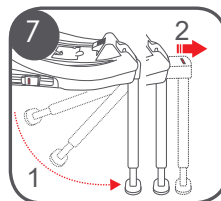


4. Insert the locking arms into the ISOFIX attachment points until you hear an audible 'CLICK,' signifying that they are fully engaged. Confirm the successful attachment by observing the green safety indicators on both sides of the locking arms' buttons. ⑥



**!** Verify the secure installation of the base by pulling on both ISOFIX connectors.

5. After positioning the base on the vehicle seat, extend the support leg to the maximum angle ⑦ – ①, and then fully extend the display window ⑦ – ②.



6. Press the adjust button of the support leg ③ - ①, hold the support leg with the other hand, and adjust its length ③ - ②. Release the adjust button when the support leg is in full contact with the ground of the vehicle. Pull on the support leg to ensure it is securely locked in place.

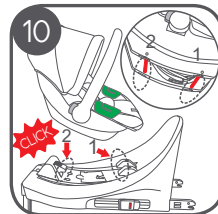
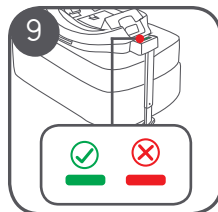
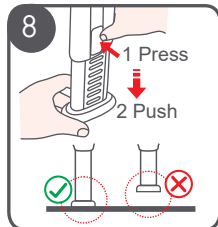
! Confirm that the support leg maintains full contact with the vehicle floor pan.

! Upon completing the installation of the support leg, the display window will transition to a green color ④.

7. Gently press the infant carrier module downward into the base ①. With one hand holding the carrier handle and the other pushing the carrier, ensure that the front steel bar securely engages with the hook ① - (1 and 1). Subsequently, apply firm pressure to the carrier, allowing the rear steel bar to go into the hook and lock ① - (2 and 2).

8. The infant child restraint is considered secure once you hear an audible "CLICK," confirming full engagement ①.

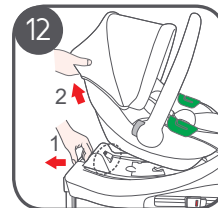
! Verify the secure attachment by pulling up on the infant carrier module to ensure it is firmly latched into the base.



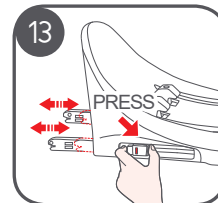
## Disassembly with base

see images ① - ②

1. Depress the button in the base ② - ① and disengage the carrier from the hook ② - ②. Grasp the handle of the carrier and lift it upward for removal.

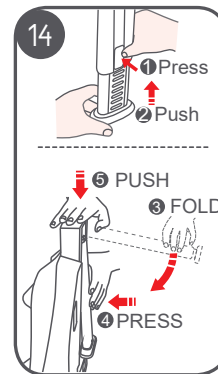


2. To uninstall the base, press and hold the switch to unlock and retract the ISOFIX interface ③.



3. Hide support legs

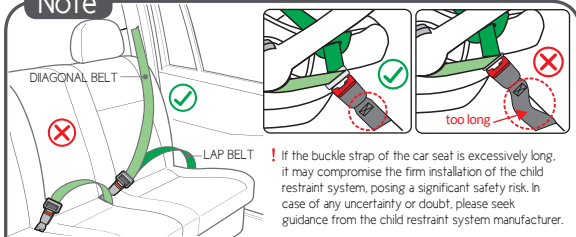
- ①-1 Press the adjust button of support leg.
- ①-2 Retract the support leg.
- ①-3 Fold the support leg
- ①-4 Hold the folded support leg with one hand.
- ①-5 Push inward with the other hand to hide the support leg panel.



## Installation without base Rearward facing, Universal belted, 40–85cm, Adult safety-belt + Y-Shaped belt

see images 15–21

### Note



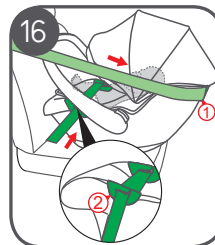
! If the buckle strap of the car seat is excessively long, it may compromise the firm installation of the child restraint system, posing a significant safety risk. In case of any uncertainty or doubt, please seek guidance from the child restraint system manufacturer.

- ! Ensure the safety belt is compliant with ECE R 16 or an equivalent standard, as indicated by testing with an 'E' or 'e' in a circle.
- ! Deactivate the front airbag following the instructions in the vehicle owner's manual.
- ! Do not use if the vehicle seat is equipped with only a 2-point belt.

1. Position the child seat on the car seat in a rearward-facing direction, ensuring that the front of the child seat is securely pressed against the backrest of the car seat. 15

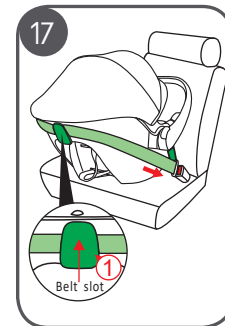


2. Extend the 3-point car seat belt through the designated belt route slot in the backrest, following the sequence indicated by the markings 1 2 3 (16–18).

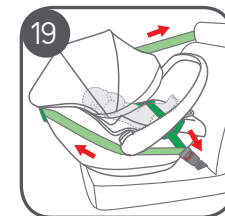
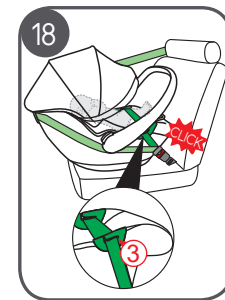


! The lap belt section should pass through both belt guides on the baby seat, lying in the groove on both sides.

3. Insert the seat belt insert into the car seat belt buckle, and ensure you hear a distinct 'CLICK' sound 16.



4. Pull the car seat belt in the direction of the arrow and ensure that the belt is tightened sufficiently 19.

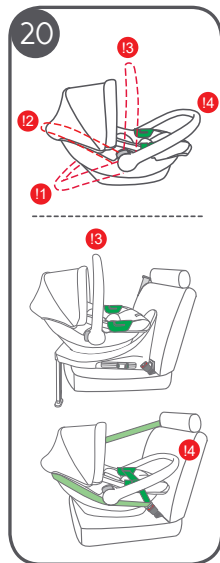


## Handle Adjustment

see images 20 - 21

The handle of the infant carrier module can be adjusted to 4 different positions. 20

- 1 To safely set the baby down outside the car seat.
- 2 To place your baby into the baby seat.
- 3 For carrying and transporting the baby or for installation in the car (with base).
- 4 For installation in the car (without base).



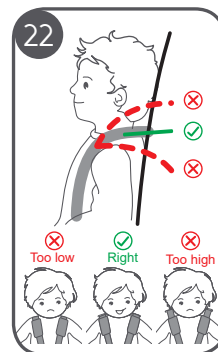
To adjust the handle, squeeze the handle buttons on both sides to release it 21-1, then rotate the handle until it clicks into any of the available positions 21-2.

## Height Adjustment

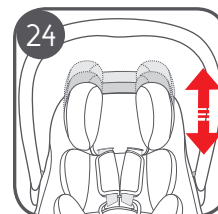
for Head Support and Shoulder Y-Shaped belt

see images 22 - 24

Verify that the shoulder Y-shaped belt straps are positioned at the correct height. Select the appropriate pair of shoulder Y-shaped belt slots based on the child's height 22.



Pull the height adjuster outward with your thumb and adjust the height 23 of the headrest up and down to ensure the shoulder belt aligns comfortably with the child's position 24.

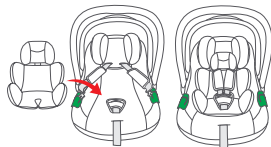




## Securing Child in the Infant Child Restraint

see images 25 - 28

### Note

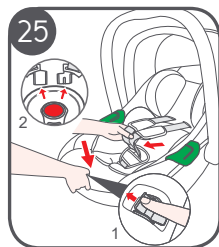


Remove the body portion of the infant insert when the infant's height is above 75cm

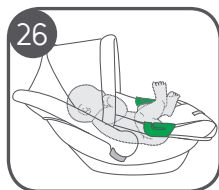
! The infant insert is designed for children's protection. Children with a height between 40 and 75cm are suitable to use the infant insert.

! After placing the child in the seat, ensure that the shoulder Y-shaped belts are adjusted to the correct height.

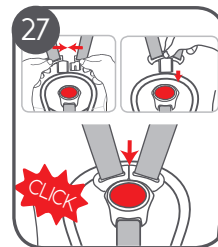
1. Press the adjuster button located under the cover and simultaneously pull both shoulder straps forward 25-1. Then, press the red button on the buckle, causing the two metal sections to pop up 25-2.



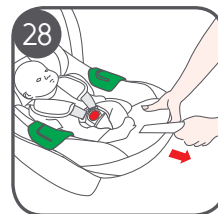
2. Place the child into the seat. 26



3. Align the left and right buckle tongues into one tongue and insert it into the buckle until you hear a 'Click' 27. ! Ensure that the Y-shaped belt is fastened without any twists. ! If needed, press the red button on the buckle to release the two metal sections.



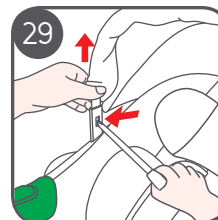
4. Pull the adjuster strap until the Y-shaped belt is fully tightened 28.



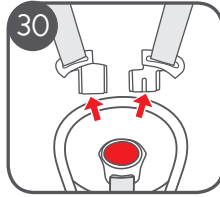
## Detaching Canopy and Seat Pad

see images 29 - 31

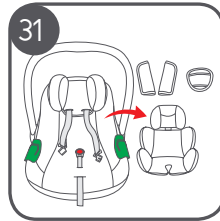
1. The canopy can be removed by extracting the awning strip from the clamping groove using tools 29.



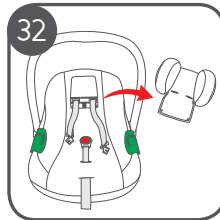
2. Release the buckle. ①



3. Remove cushion ,Comfort pad and shoulder pad. ②

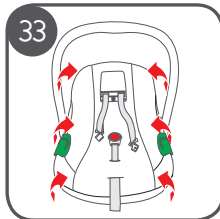


4. Unbutton the cloth cover and remove the headrest. ③



5. Pull all directions to take out the cover. ④

! Follow in reverse order and repeat the procedure to put on the fabric cover



## Care and Maintenance

- ! Regularly check the child seat during daily use. Replace the child seat if it has been involved in an accident.
- ! Store the child seat in a dry and well-ventilated place to prevent dampness and mold.
- ! If the child seat becomes dusty, clean the seat belt and plastic components by wiping them with a damp sponge and allow them to air dry.
- ! If food or drink accidentally spills on the buckle, disassemble the seat belt from the child seat and rinse it gently with warm water. Let it dry naturally.
- ! If the infant child restraint and base are not in use for an extended period, remove them from the vehicle seat. Store the infant child restraint in a cool, dry place, ensuring it is inaccessible to children.

### Washing instruction

When cleaning the entire child seat fabric cover, never use any solvents, chemical detergents, or lubricants on any part of your child seat.

